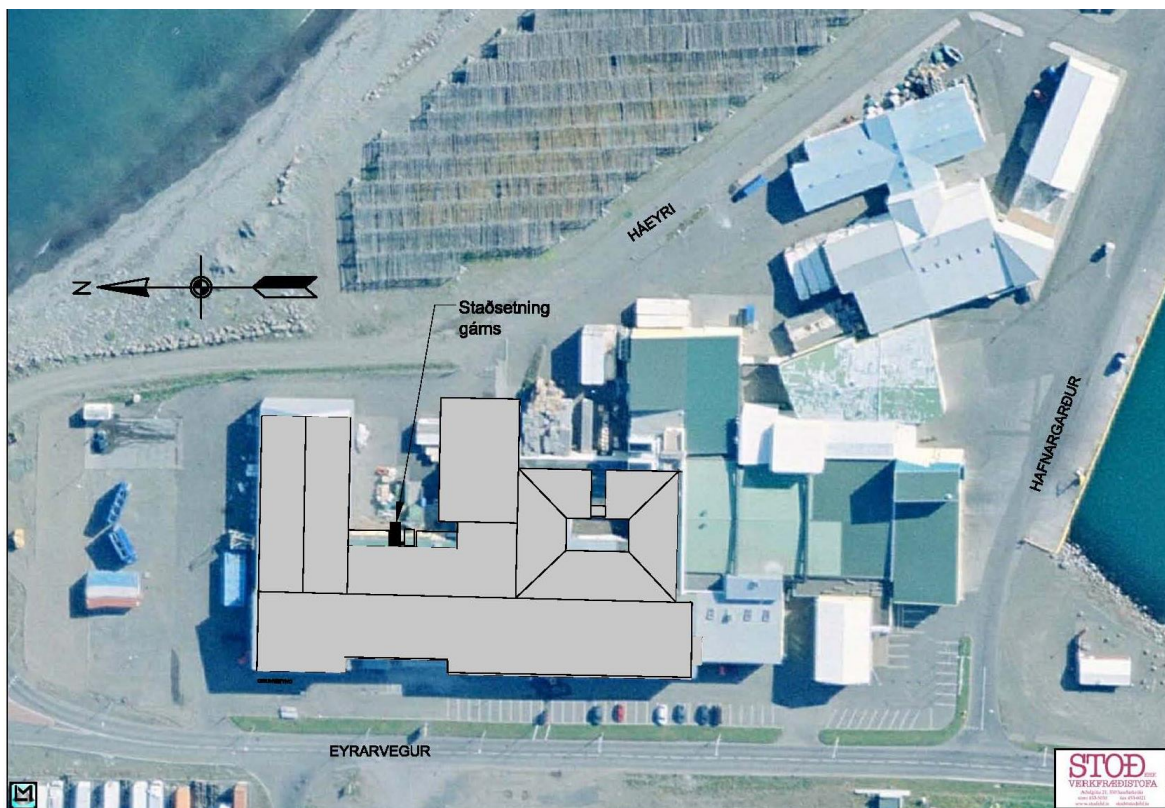


Viðauki I

Myndir af búnaðinum og fyrirhugaðri staðsetningu



Viðauki II

Upplýsingar frá framleiðanda um útblástur sem sýna að búnaðurinn uppfyllir viðmið sem sett eru í Evrópulöggjöf.



Unit 2, Canning Road Industrial Estate
Southport, PR9 7SN, www.inciner8.com
Tel: +44(0)1704 884 020, Email: info@inciner8.com

Inciner8 Emissions Data

Measured parameters: temperature, gas flow, CO₂, O₂, NO_x, pressure, flow speed, dust (particulates)

Measured parameters compared to Directive 2000/76/EC of the European Parliament and of the Council of 4 December 2000 on the incineration of waste.

Medical waste

| Parameter | Limits (half hour average) | Measured |
|---|----------------------------|------------------------|
| Total dust | 30 mg/m ³ | 12 mg/m ³ |
| Sulphur dioxide (SO ₂) | 200 mg/m ³ | 2,4 mg/m ³ |
| Nitrogen monoxide (NO) and nitrogen dioxide (NO ₂), expressed as nitrogen dioxide | 400 mg/m ³ | 60 mg/m ³ |
| Carbon monoxide (CO) | 100 mg/m ³ | 98,3 mg/m ³ |

Animal waste*

| Parameter | Limits (half hour average) | Measured |
|---|----------------------------|-------------------------|
| Total dust | 30 mg/m ³ | 17,0 mg/m ³ |
| Sulphur dioxide (SO ₂) | 200 mg/m ³ | 116,3 mg/m ³ |
| Nitrogen monoxide (NO) and nitrogen dioxide (NO ₂), expressed as nitrogen dioxide | 400 mg/m ³ | 361,9 mg/m ³ |
| Carbon monoxide (CO) | 100 mg/m ³ | 98,7 mg/m ³ |

* Incineration and co-incineration plants treating only animal waste are excluded from the scope of this Directive

General waste

| Parameter | Limits (half hour average) | Measured |
|---|----------------------------|-------------------------|
| Total dust | 30 mg/m ³ | 17,8 mg/m ³ |
| Sulphur dioxide (SO ₂) | 200 mg/m ³ | 7,5 mg/m ³ |
| Nitrogen monoxide (NO) and nitrogen dioxide (NO ₂), expressed as nitrogen dioxide | 400 mg/m ³ | 88,3 mg/m ³ |
| Carbon monoxide (CO) | 100 mg/m ³ | 84,00 mg/m ³ |

Signed:

Ghazi Sadledein – Sales Manager

Inciner8 Ltd

Directors: V.P. Ferguson : Registered Number : 04866401 Vat No. 855 9995 44



Þýðing á töflu í ofangreindu skjali um gildi sem eiga við brennslu á sláturúrgangi.

Inciner8 Útblásturs gögn

Mældir mælipættir: hitastig, gasflæði, CO₂, O₂, NO_x, þrýstingur, flæði hraði, ryk (svifagnir)

Mælipættir eru bornir saman við tilskipun Evrópuþingsins og ráðsins 2000/76/EB frá 4. desember 2000 um brennslu úrgangs.

| Mælipáttur | Viðmið (hálf tíma meðaltal) | Mæld gildi |
|--|------------------------------------|-------------------------|
| Ryk | 30 mg/m ³ | 17,0 mg/m ³ |
| Brennsisteins dioxíð (SO ₂) | 200 mg/m ³ | 116,3 mg/m ³ |
| Köfnunarefnis monoxíð (NO) og köfnunarefnis dioxíð (NO ₂), sýnd sem köfnunarefnis dioxíð | 400 mg/m ³ | 361,9 mg/m ³ |
| Kolmonoxíð (CO) | 100 mg/m ³ | 98,7 mg/m ³ |

* Brennslustöðvar og sambrennslustöðvar sem meðhöndla eingöngu dýraúrgang eru undanþegnar gildissviði tilskipunarinnar.